

T218

Conversion Kit[®] for Mack Granite Vocational Light Truck



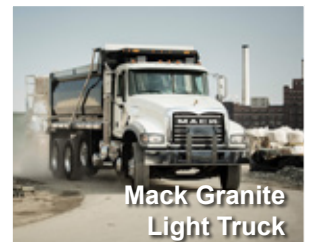
Ask to see Immersive Technologies' extensive catalog of quantified business improvements, solving problems in areas such as safety, productivity, reactive maintenance and the availability of skilled equipment operators.

REAL RESULTS
MEAN IMPROVEMENTS*

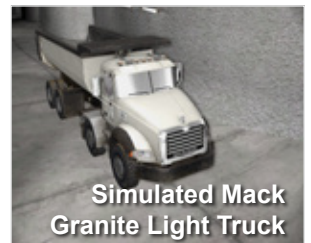
SAFETY	
↑ 54%	Correct Emergency Response
↓ 47%	Traffic Incidents
UNSCHEDULED MAINTENANCE	
↓ 65%	Brake Abuse
↓ 62%	Engine Overspeed
COST SAVINGS	
↓ 54%	Training Hours on Equipment
↑ 20%	Tire Life
PRODUCTIVITY	
↓ 15%	Spot Time
↑ 14%	Payloads

* All results are average in-field improvements, documented and verified by external parties.

Immersive Technologies' T218 Conversion Kit provides the ultimate in training realism for mines focused on operator safety, improving productivity and reducing unscheduled maintenance. The Conversion Kit includes a complete cab replica of the Mack Granite Vocational Light Truck with functional controls and instrumentation sourced from Mack.



With mining equipment becoming increasingly technically sophisticated, the level of information, experience and organizational competencies required to accurately simulate these machines also increases. Through Immersive Technologies' industry experience, you can be assured your training solution will be the only accurate and true representation of the real machine available.



Expect Results

T218 Conversion Kit® for Mack Granite Vocational Light Truck



OEM Steering wheel and switches simulating a cabin with the steering wheel on the left side

Hoist lever for rear tripping tray

Gear lever, pedals and simulation supporting the Eaton Fuller 8LL gear box



Conversion Kit Features

CONVERSION KIT® COMPATIBLE WITH SIMULATORS

PRO4 IM360 LX6 LX3

Innovative Simulator Training Software

Immersive Technologies' SimControl software includes a range of specific Mack Granite operator errors for recording and measuring incorrect operator behaviors. In addition, SimControl allows a trainer to initiate machine faults or incidents in order to train and assess operators in responding appropriately.

Training opportunities include:

- Hazard Avoidance
- Operator Productivity
- Site Safety Procedures
- Traffic Awareness
- Fuel Efficiency
- Minimizing
Unscheduled Maintenance



Industry Leading Mining Simulators

As the world's largest supplier of mining equipment simulators, Immersive Technologies has deployed solutions in 45 countries and works closely with mining operations and equipment manufacturers to solve real industry problems in areas of safety, productivity, reactive maintenance and the availability of skilled personnel. Immersive Technologies is the only equipment simulator supplier with a consistent and proven track record of delivering significant and measurable in-field improvements.

This experience, together with ongoing feedback from our mining customer base and Original Equipment Manufacturer alliance partners, has provided Immersive Technologies with the knowledge necessary to develop the industry standard in Advanced Equipment Simulators. Our solutions incorporate the industry's most advanced training functionality ensuring your operators are safer and your site is more profitable.

